

FRASER

ELEVATION C - 2625 SQ. FT.



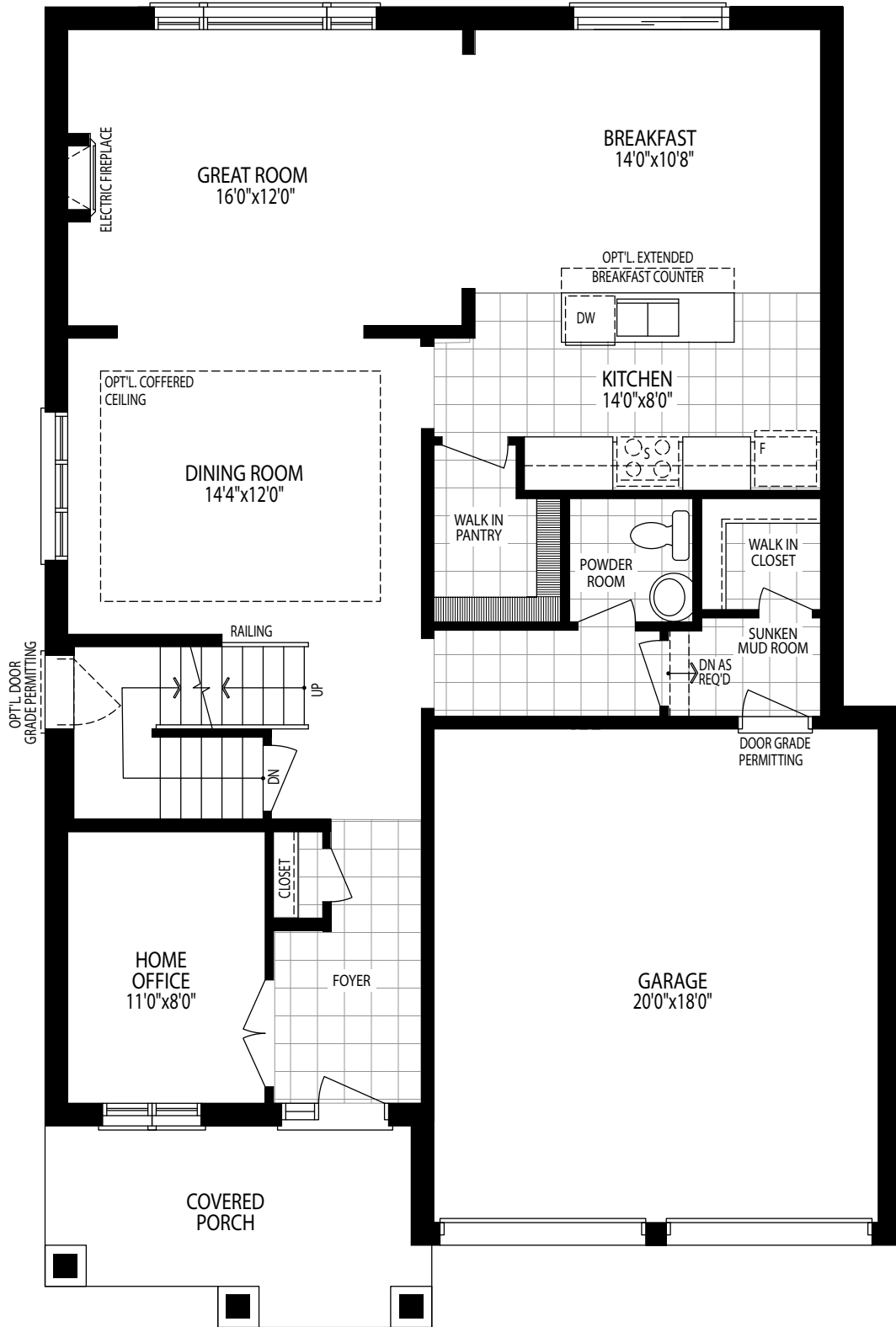
ELEVATION B



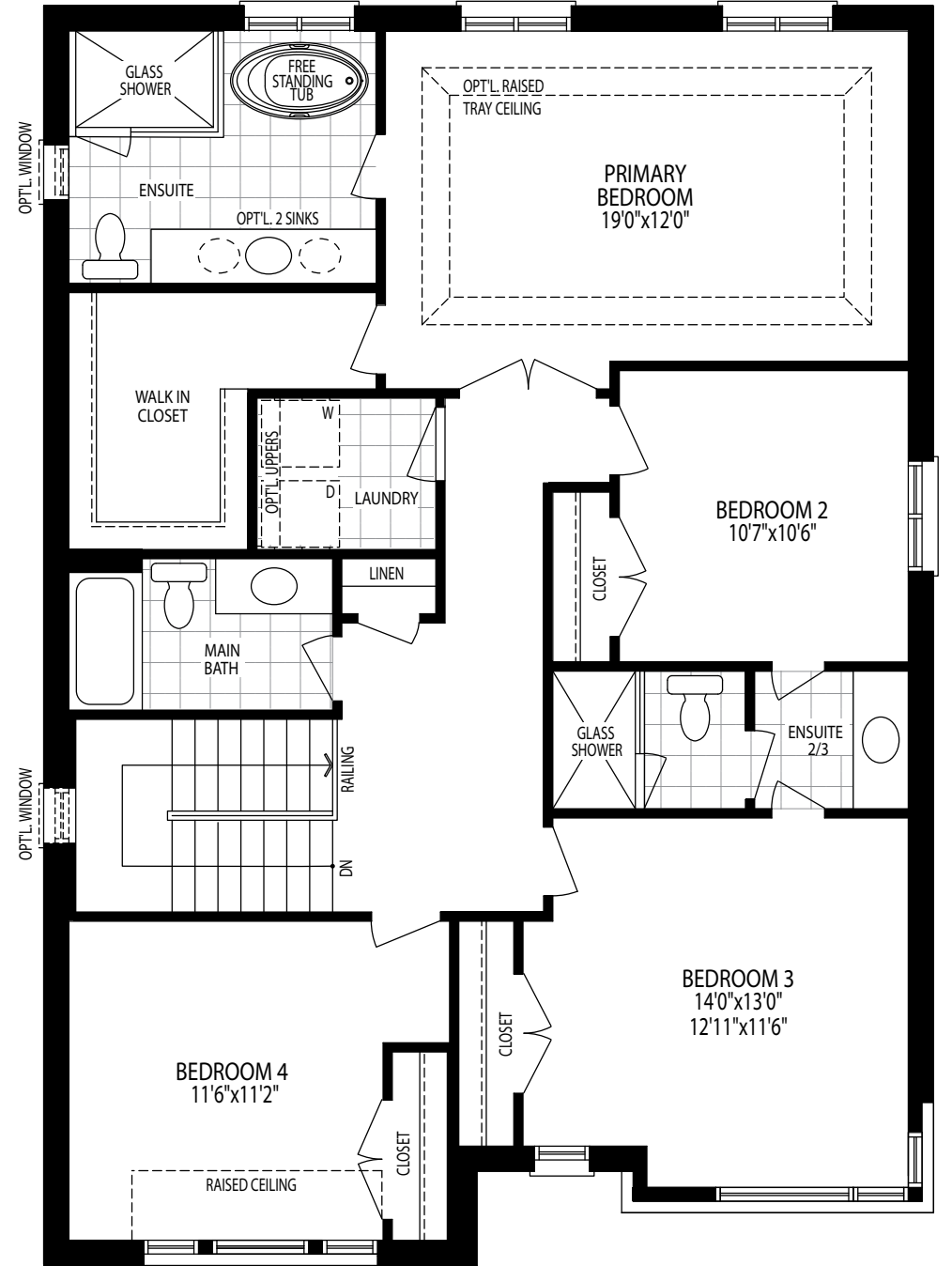
ELEVATION A



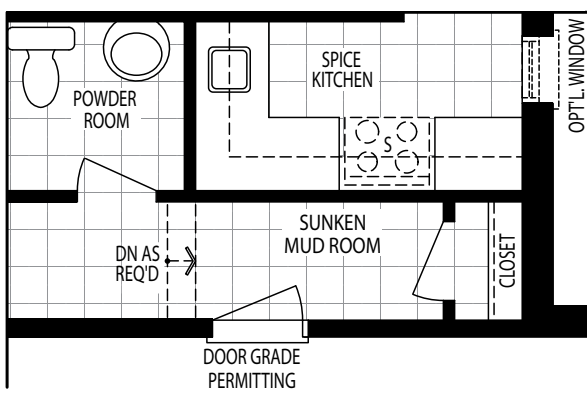
FRASER



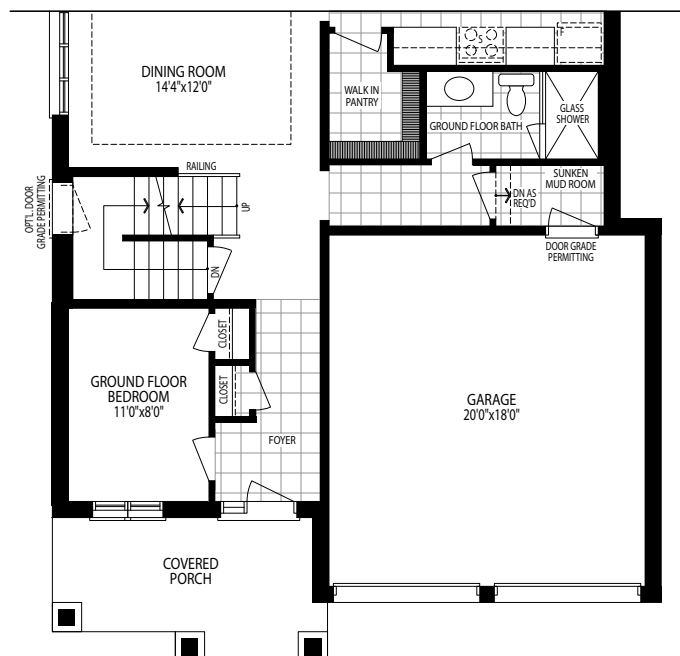
GROUND FLOOR PLAN ELEVATION C



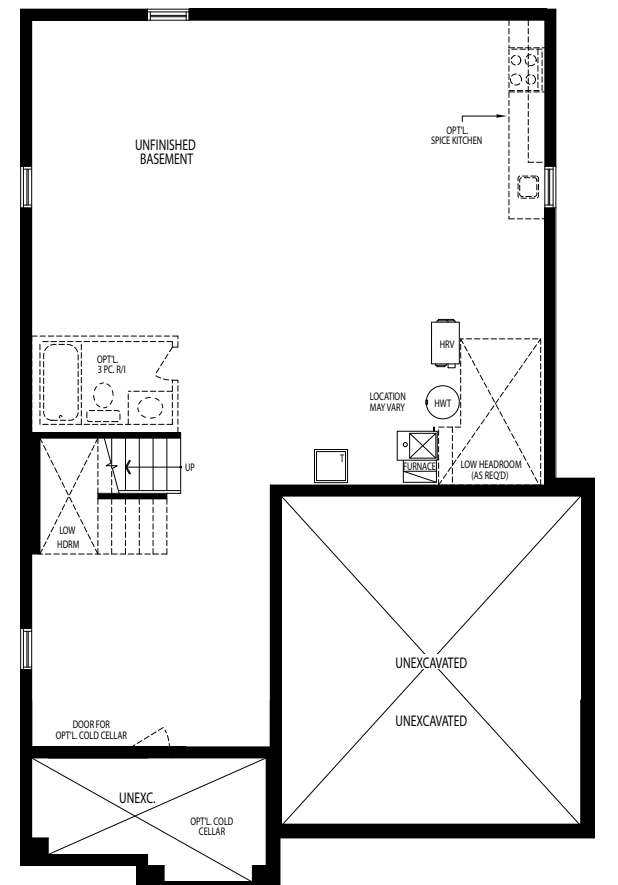
SECOND FLOOR PLAN ELEVATION C



PART. GROUND FLOOR PLAN WITH OPT'L. SPICE KITCHEN, ELEVATION C



PART. GROUND FLOOR PLAN WITH OPT'L. BEDROOM & 3-PC BATH ELEVATION C



BASEMENT FLOOR PLAN ELEVATION C

MACKENZIE

ELEVATION C - 2795 SQ. FT.



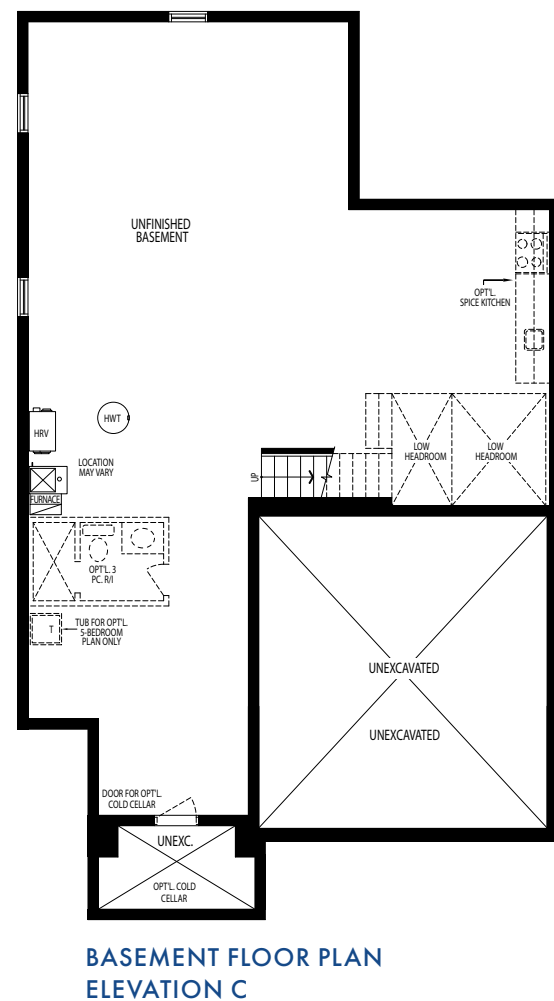
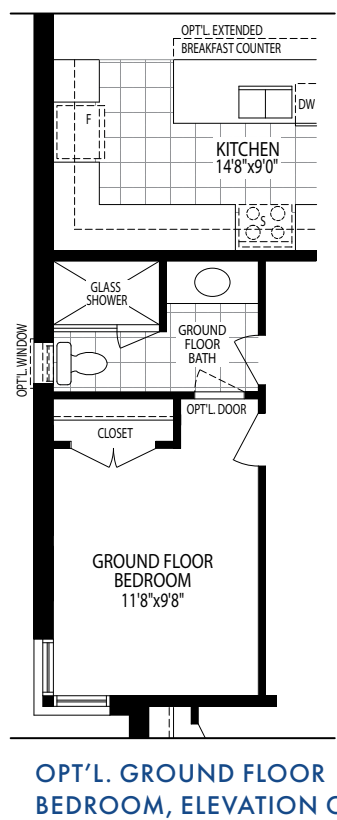
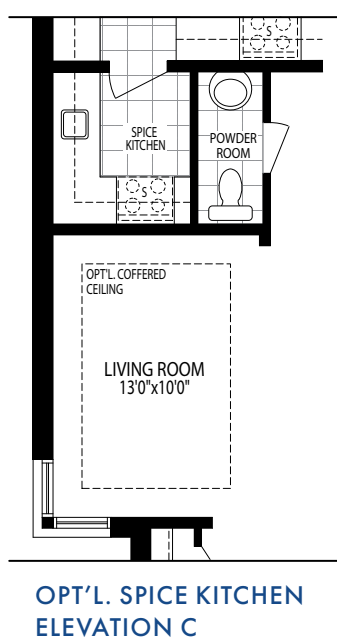
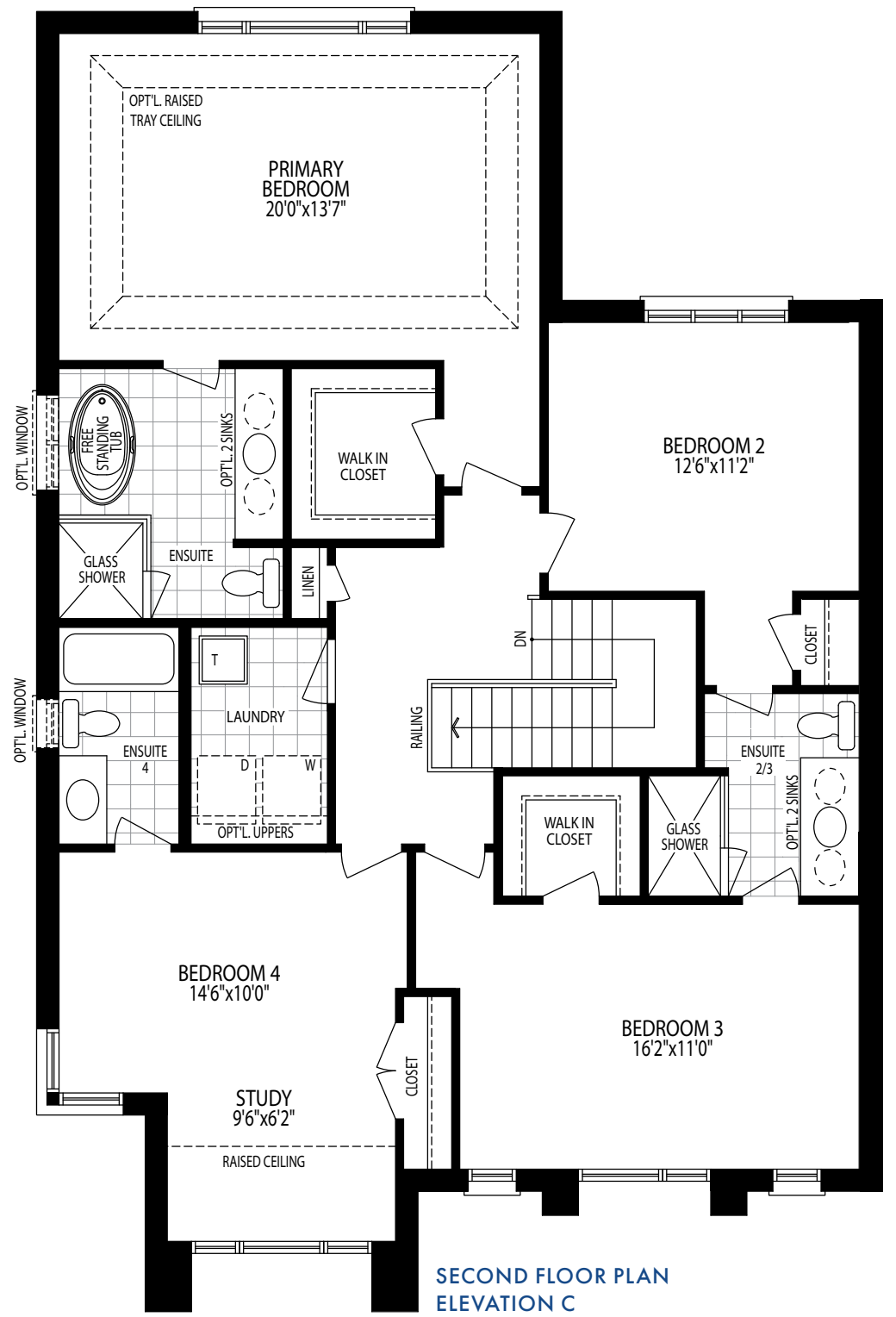
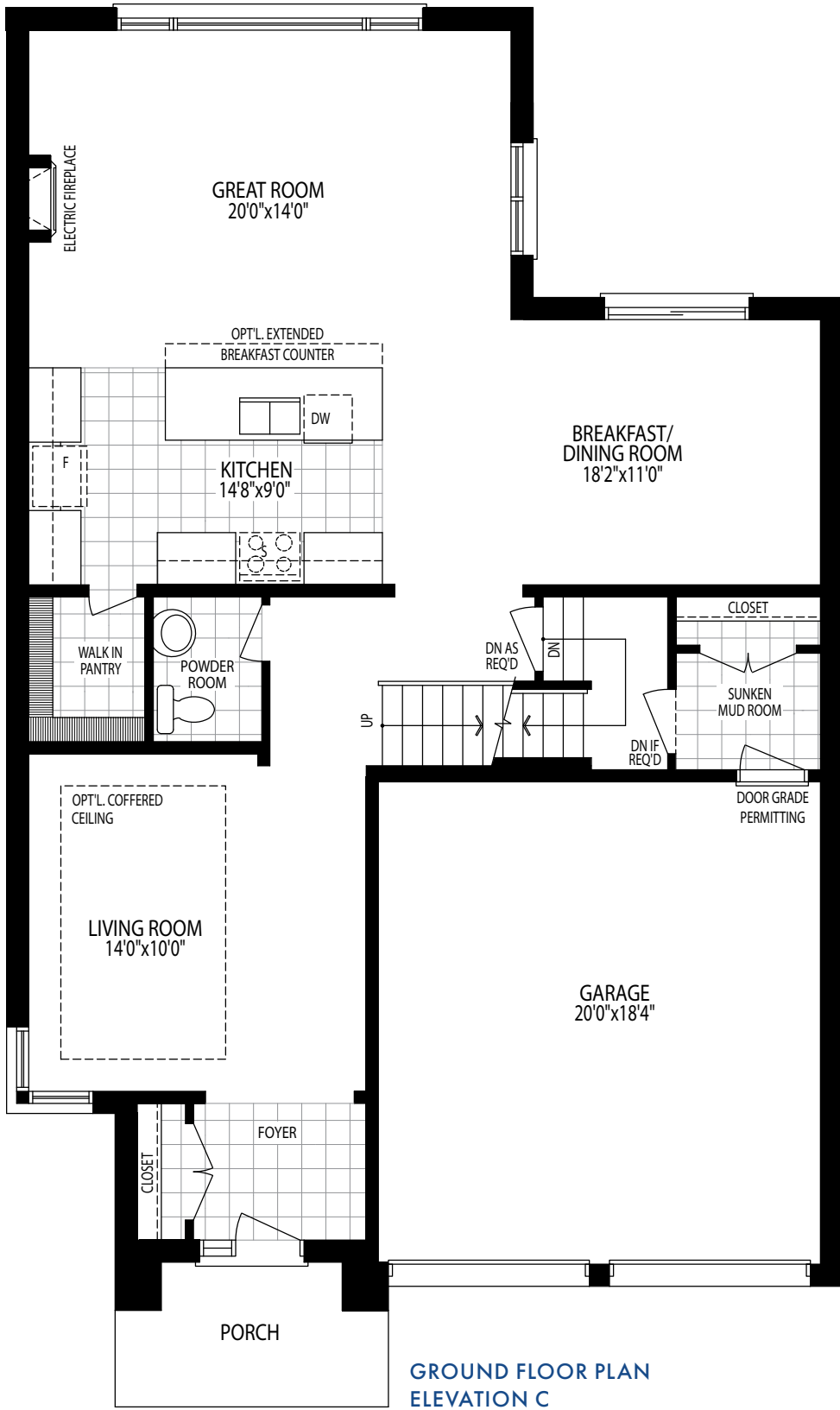
ELEVATION B



ELEVATION A



MACKENZIE



NELSON

ELEVATION C - 3051 SQ. FT.



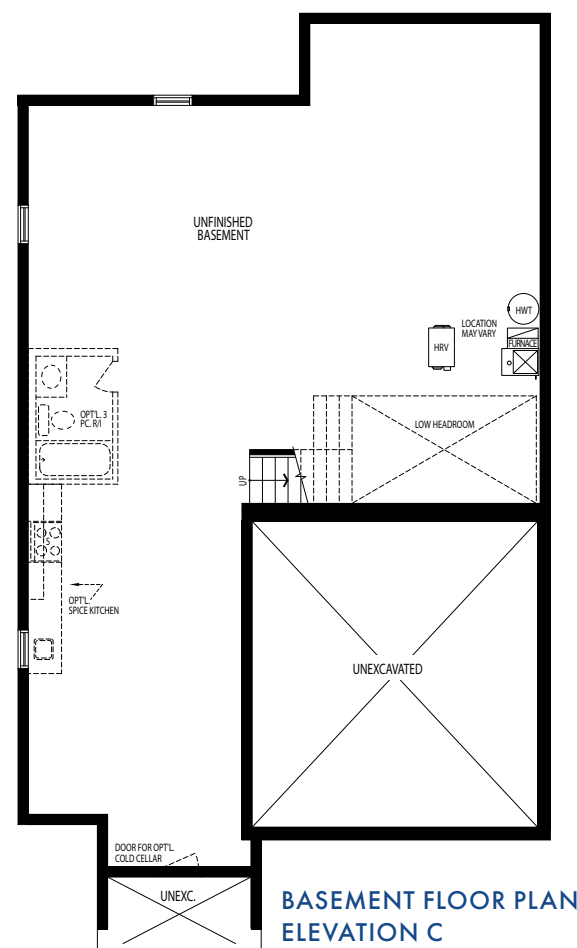
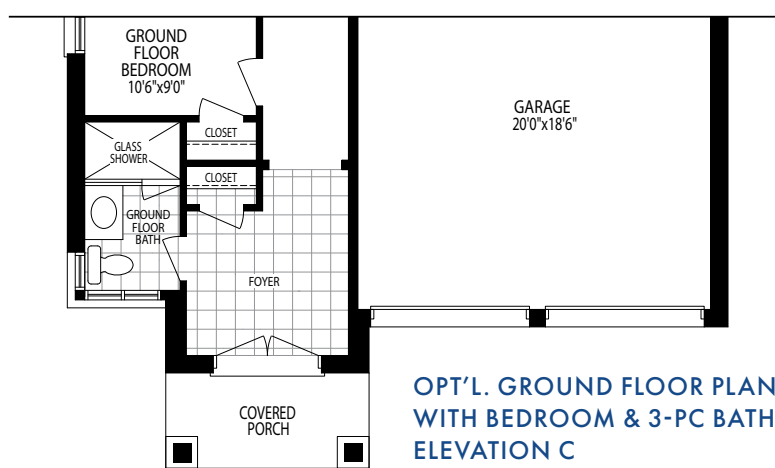
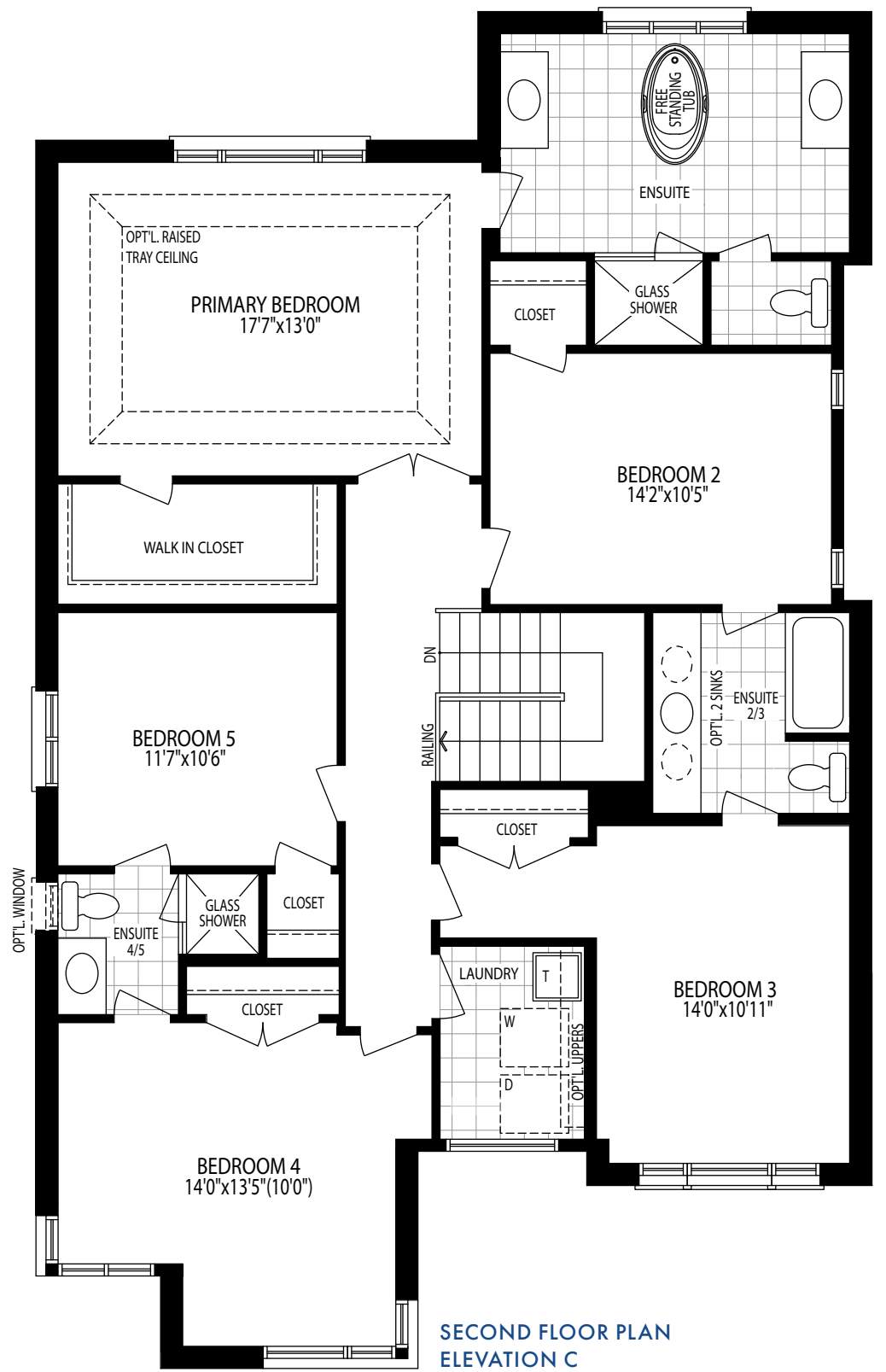
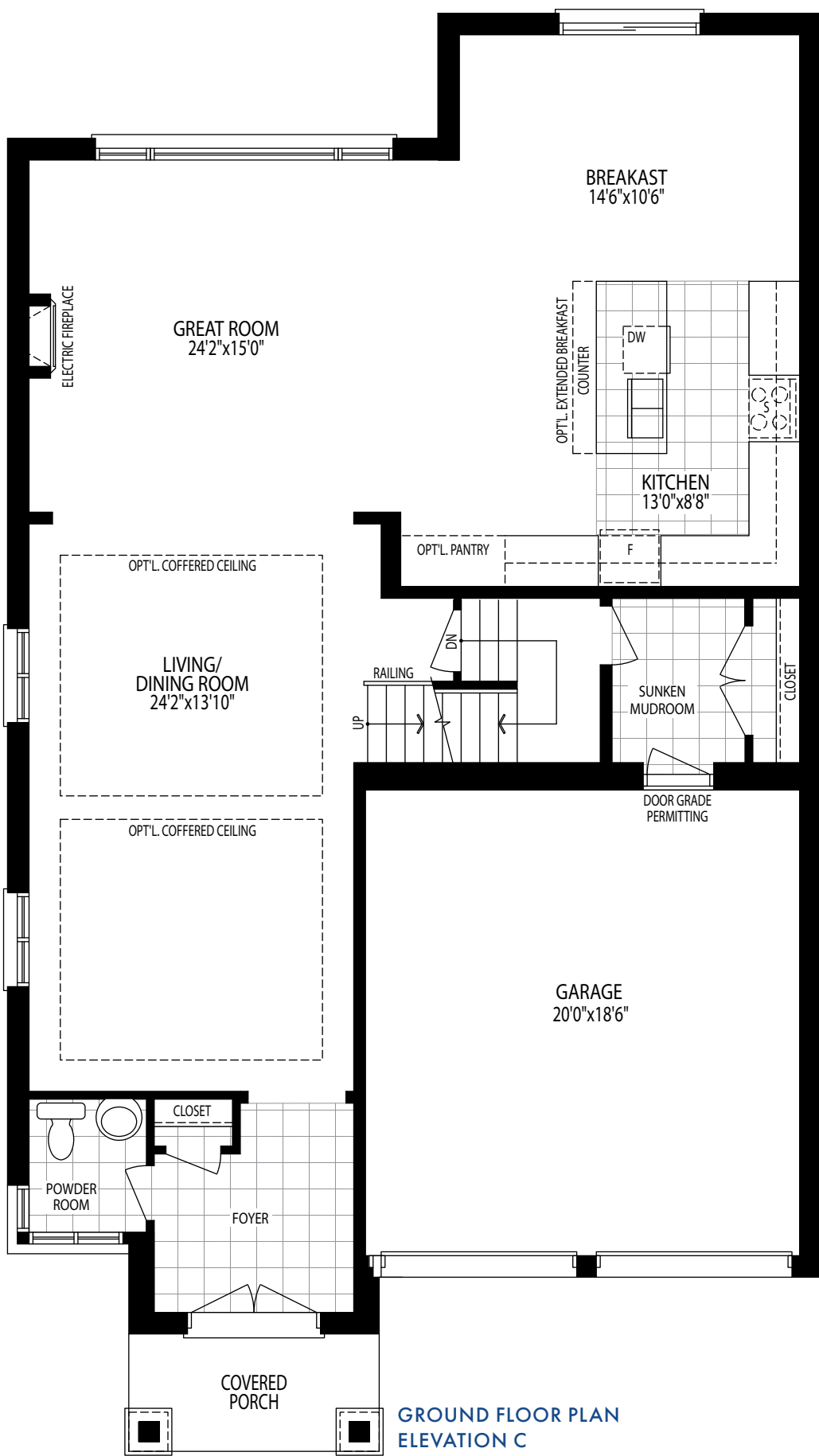
ELEVATION B



ELEVATION A



NELSON



SEVERN

ELEVATION C - 2793 SQ. FT.



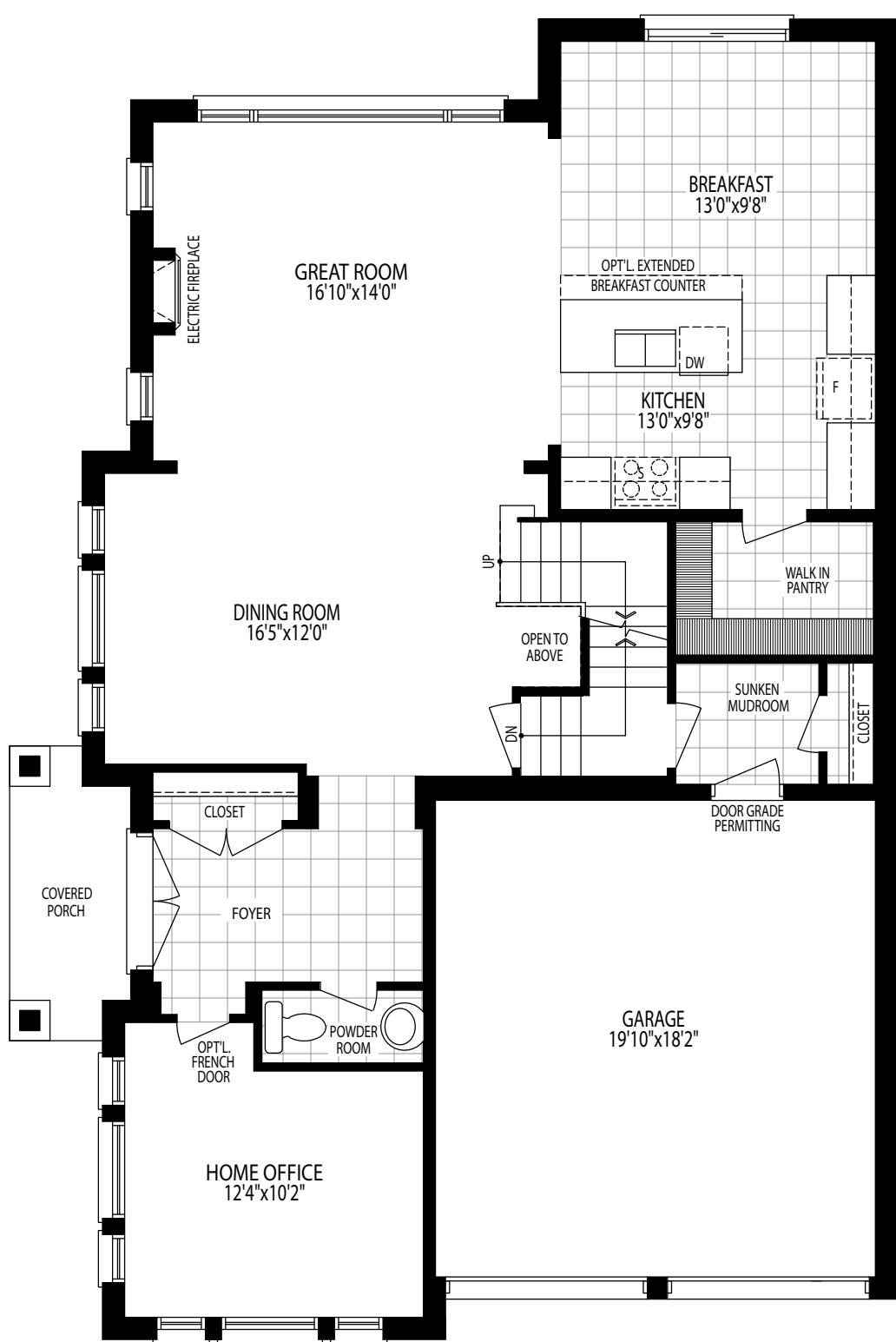
ELEVATION B



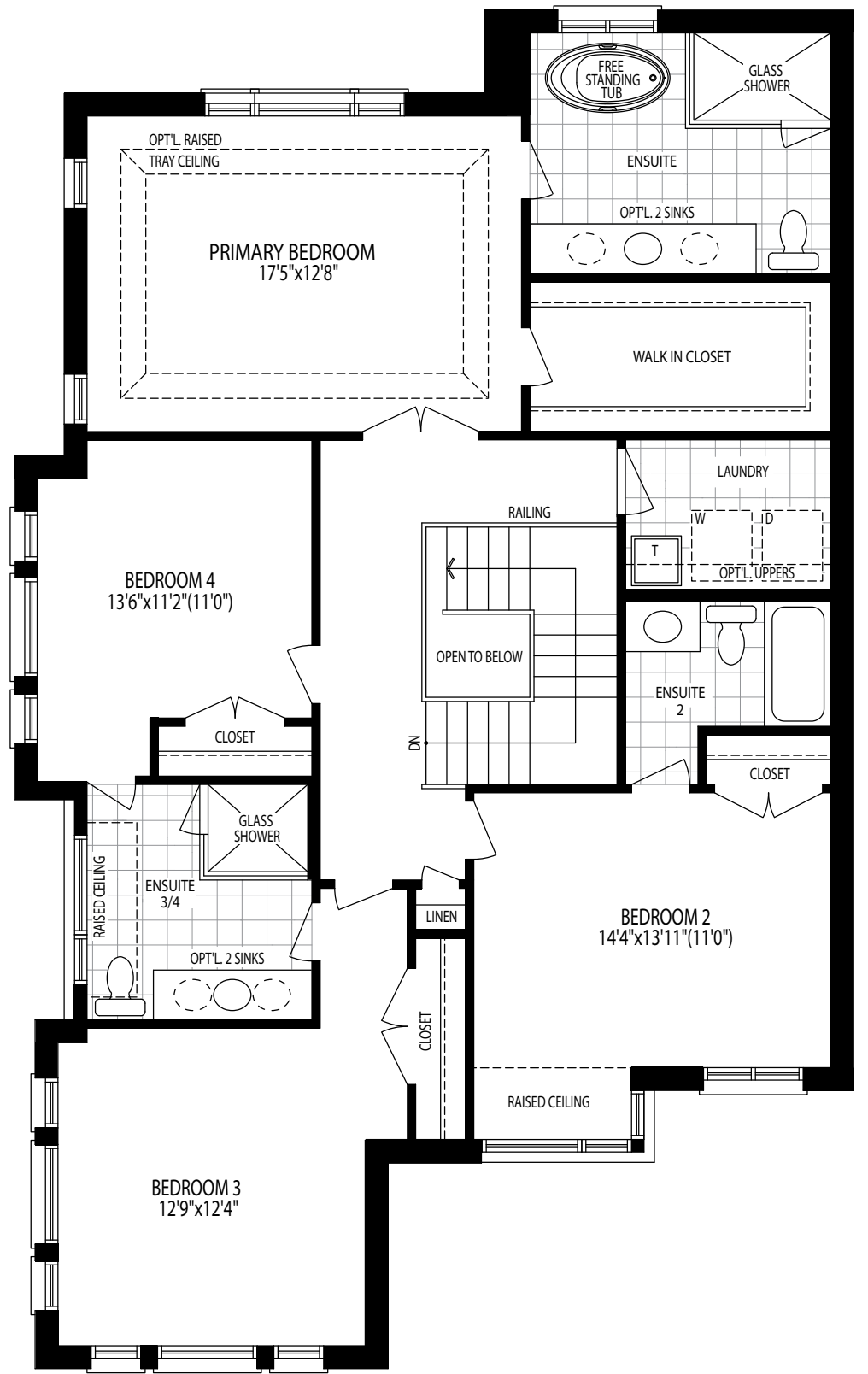
ELEVATION A



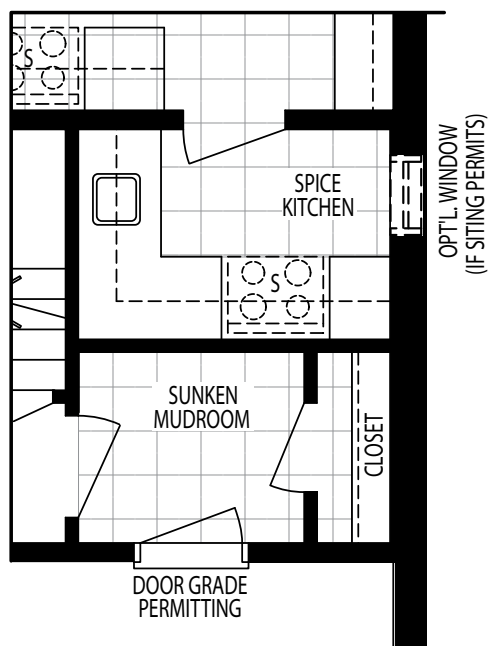
SEVERN



GROUND FLOOR PLAN
ELEVATION C



SECOND FLOOR PLAN
ELEVATION C



PART. GROUND FLOOR PLAN
WITH OPT'L. SPICE KITCHEN
ELEVATION C

